



Newsletter

A Publication of the Colorado Speech-Language-Hearing Association

Spring 2014

Inside This Issue

- ❖ Meet Your 2014 CSHA Executive Board
- ❖ CSHA Spring Conference and Job Fair
- ❖ CSHA T-Shirts
- ❖ Coffee Talks
- ❖ Better Hearing and Speech Month Contest
- ❖ Student Corner
- ❖ Book Review
- ❖ ACE Awards



Scan this QR Code with your smart phone and check out CSHA's website. Get information on upcoming events, renew your membership, find links to important resources, and much more. If you have questions or suggestions on how CSHA can serve your needs better, please send us an email to csha@cshassoc.org or call us at 855-727-2836.



Colorado Speech-Language and Hearing Association

President's Letter

Welcome to 2014, CSHA Members!



Your new CSHA Board of Directors is honored to serve alongside you this year in continuing the positive momentum gained by the accomplishments of 2013. The achievement of Certification for speech-language pathologists was the culmination of many years of hard work and I speak for all Board members when I say, "Thank you!" to our membership for your support and patience during the process.

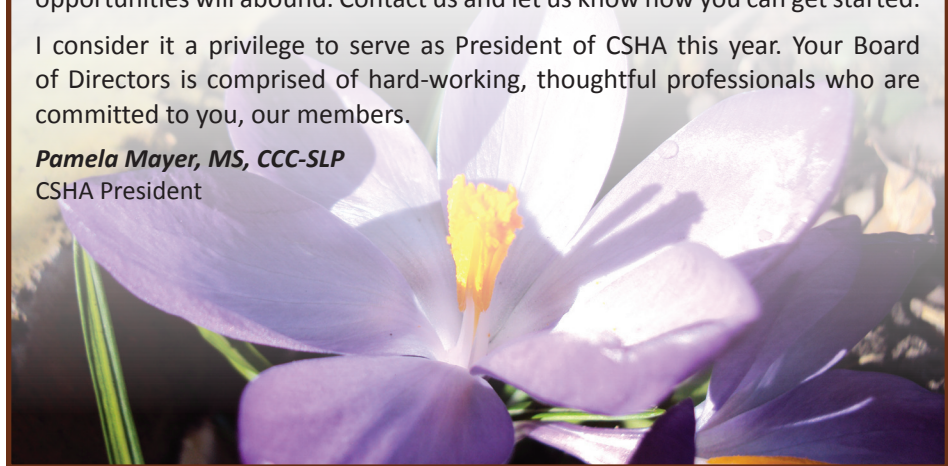
CSHA experienced growth in membership this past year that allows us to have a more significant voice in addressing the issues that continue to face our professions, such as the rapidly changing insurance landscape and proposed changes to tax laws that will directly affect the families we serve.

In addition, a growing membership allows us more diverse continuing education opportunities. Registration for our Spring Conference is open and we are anticipating a large number of attendees. Planning is well underway for our Fall Conference. Your responses to our survey in 2013 has given us critical feedback in how we can best meet your needs for continuing education. Thank you to those who participated!

CSHA is always looking for members who would like to be more involved and now would be a perfect time. With the coming of ASHA in 2015, volunteer opportunities will abound. Contact us and let us know how you can get started.

I consider it a privilege to serve as President of CSHA this year. Your Board of Directors is comprised of hard-working, thoughtful professionals who are committed to you, our members.

Pamela Mayer, MS, CCC-SLP
CSHA President



Meet Your 2014 CSHA Executive Board

Have you ever been interested in serving on the CSHA Board?

Well now might be your chance! We still have a few openings on our Board and would love to know if you're interested! Feel free to contact our office if you're interested.

Current Positions are OPEN on the CSHA Board and we're looking for volunteers!!

VP for Public Policy – The Vice President for Public Policy role and responsibilities include working with the Board of Directors in addressing questions regarding our new licensure law and legislation. This position also works with the CSHA Board in forming a position statement on new laws/legislation as they relate or pertain to the areas of speech pathology and audiology.

VP for Public Policy Elect – Supporting the VP for Public Policy in responding to questions on the new licensure law and legislation as well as forming position statements on new laws/legislation as they relate to the areas of speech pathology and audiology.

CSHA STAR – The State Advocates for Reimbursement (STAR) Liaison is responsible for national reimbursement issues in the private sector. The STAR is required to participate in monthly national phone meetings, attend a CSHA Board of Directors meeting at least two times per year and attend ASHA meetings one to two times per year.



President – Pamela Mayer

Pamela Mayer, MS, CCC-SLP, earned her bachelor's and master's degrees in speech-language pathology from Idaho State University and began her professional career as a private contractor providing services in rehabilitative, behavioral and private pediatric settings. In addition, she was honored to be invited to return to Idaho State University as a clinical instructor where she taught and supervised graduate students in their clinical experience in the university's communication preschool program. She discovered early on that her passion is working with preschool children and their families using research-based clinical approaches. Pamela was involved with the Idaho Speech-Language-Hearing Association representing graduate student interests to the Board of Directors and assisting in planning local and state conferences. Pamela and her husband, John, moved to Colorado Springs in 2007. She is the owner of Talk & Play Associates, LLC, a family-centered speech and occupational therapy clinic. They have two adult children, Madi, a college student studying accounting in Colorado Springs, and Nick, a musician, living and working in Charlotte, NC. She considers it a privilege to serve as President of the Colorado Speech-Language-Hearing Association for 2014.



President-Elect – Patricia Hurley

Patricia is very excited about our upcoming Spring Conference and the fact that the Annual ASHA Convention will be in Denver in November 2015! She has been an SLP in a variety of settings (schools, early childhood, skilled nursing facilities, hospice) for 30 years. She has worked for Colorado Springs School District 11 for 14+ years and this is her fourth year as an SLPA supervisor. Patricia lives in Colorado Springs and is the mother of two young-adult children.



Past President – Colet Scott-Bisping

Colet has been serving on the CSHA board for six years. She moved to Colorado from Minnesota nine years ago and has been at Children's Hospital Colorado ever since. Although she worked at KidStreet and in outpatient therapy during her years there, inpatient rehabilitation is her passion. She is currently the team lead for the inpatient rehabilitation team. Colet lives in Broomfield, Colorado with her husband and two amazing girls, Amelie and Juliet.

Vice President for Public Policy

Vice President for Public Policy Elect

Positions Open – Volunteer Opportunities!



Vice President for Education – Donna Boudreau

Donna Boudreau is a speech-language pathologist in Fort Collins specializing in language and literacy assessment and intervention for preschool and school-aged children. She currently serves as the speech-language pathology department lead in Poudre School District, and maintains a small private practice. Donna is an adjunct faculty member at University of Northern Colorado and University of Colorado, Boulder.



Vice President for Education Elect – Liliana Diaz Stagakes

Liliana Stagakes is a bilingual (Spanish) speech-language pathologist at Denver Health Hospital (DHH). She provides inpatient and outpatient services across the life span at DHH, and is passionate about working with people from a diversity of backgrounds. She also provides early intervention services in people's homes and has recently started to provide accent modification services on a private basis. She arrived in the U.S. 17 years ago from Colombia and eventually moved to Denver, Colorado, attracted by the world-class winter sports opportunities. In her spare time, she is a world traveler, an Operation Smile volunteer and an avid winter sport participant. Liliana looks forward to serving CSHA members as Vice President for Education Elect.



Vice President for Membership – Jennifer Carter

This is Jen's second year on the Board serving in the role of VP for Membership. Her professional passion is dysphagia, and she works at her private practice, the Carter Swallowing Center, which specializes in swallowing disorders. She lives in Denver with her husband and dog Jackson and enjoys hiking and backpacking.

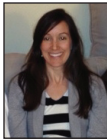
Vice President for Membership Elect – Rob Abrams



Treasurer – Kristin Blum

Kristin Blum is a speech-language pathologist at Children's Hospital Colorado. She provides outpatient speech and language intervention and diagnostics and is particularly passionate about working with children and families from culturally and linguistically-diverse populations. She lives in Denver, CO, and enjoys spending time outdoors with her husband, Mike and new daughter, Gabriella. Kristin looks forward to continuing to serve CSHA members in 2014 as Treasurer!

2014 CSHA Executive Board (continued)



Treasurer Elect – Alison Wall

Currently Alison Wall is Treasurer Elect on the CSHA Board. She has been a speech-language pathologist working for Children’s Hospital Colorado since 2005. Alison enjoys organizing and creating for social language and early childhood language groups. Alison collaborates with other therapists as a member of the Autism Spectrum Disorders Team within the speech-language department. Also, some other activities she enjoys include running, skiing, biking, traveling to see family and friends, cooking and visiting the local farmer’s market. She cheers on the Packers and Badgers football teams from her native Wisconsin.



Communications Director – MayJean Barnes

MayJean has been a speech-therapist at Children’s Hospital Colorado for the last six years. She has a background in working with the deaf and hard of hearing community, but her primary passion is inpatient rehabilitation. MayJean and her husband enjoy quiet, country living in eastern Colorado with their daughter, Lana and two rambunctious puppies, Nan and Reggie.



Communications Director Elect – Jenny Lisson

Jenny Lisson is a 17-year transplant to the Denver area from Louisiana. She has worked in Houston Medical Center and as the owner of Speech and Audiology Services in St. Louis, Missouri. She currently works in Cherry Creek School District, Spaulding Rehabilitation and Swedish Medical Center, as well as adult home health. She is looking forward to always learning more and representing our organization in the Colorado Speech-Language-Hearing Association.



CU Student Liaison – Sarah Zebrowski

Sarah Zebrowski is a first year MA-SLP student at CU Boulder. Having previously worked in research at the University of Washington Autism Center, her interests lie in social communication, child development and language. Now that she is in graduate school, she finds that her interests are rapidly expanding as she learns more about our ever-changing and exciting field!

UNC Student Liaison – Kyle Delahanty

Foundation Representative – Terry Eberly

SLP Advisory Counsel – Kathy Boada

SLP Advisory Counsel – Kathryn Pegan

SEAL – Lisa Gessini

SLAC – Maureen Melonis

STAR – Position Open – Volunteer Opportunity!

Courage to Risk Liaison – Ann Whitney

CEU Administrator – Beth O’Brien



CSHA Central Office – Amy Caye and Diane Yenerall

Amy and Diane work for Craven Management Associates, an association management firm. They manage the daily operations of the CSHA Central Office including membership inquiries, communication with the Board, Conference and event planning, production of *CSHA Newsletter*, website and they assist in the financial management of CSHA.

CSHA Membership Campaign

We are always thrilled to have people join in our efforts to build, advocate for and protect our wonderful professions.

The first step toward advocacy is “putting your money where your mouth is” and joining our organization. Thank you so much for taking the time and prioritizing our mission in these tough economic times. Please welcome the following new CSHA Members when you get a chance:

Christine Zwolfer	Cynthia Payler	Susie Bartolome Peterson
Amanda Stoecker	Alexandra Dvorak	Rachel Fugler
Sarah Zebrowski	Maureen Creswell	Jillian Stanfield
Julia Vogt	Megan Riesgaard	Adriana Pennino
Scott Zischke	Mindy Teiken	Kelly Pierson
Deborah Mitchell	Clair Ketchum	Kirsten Fogle
Kyle Delahanty	Sheri Higgins-Hankins	Jessica Lugo
Robert Abrams	Elizabeth McMillon	Caroline DeCelles
Cindy McCallum	Natasha Summers	Kathleen FitzGerald
Karen Todd	Katie Reppis	
Martha Pyatt	Nancy Houser Bluhm	

Denver Dysphagia Rounds

Would you like an opportunity to learn more about dysphagia and meet with other dysphagia clinicians? If so, please join local speech-language pathologists for the quarterly Denver Dysphagia Rounds meetings where clinicians present to one another about various dysphagia topics.

The next meeting is Tuesday, May 6, from 5:30-7:00 pm at the Craig Hospital Patient and Family Housing building.

For more information, please contact Jen Carter at Jen@carterswallowingcenter.com.

Hope to see you there!



CSHA Spring Conference and Job Fair

Friday, April 4, 2014

8:00 am - 4:00 pm

Children's Hospital Colorado



Christina Gildersleeve Neuman will present

Current Models of Intervention for Childhood Apraxia of Speech and Other Severe Speech Sound Disorders

Dr. Neumann served on ASHA's ad hoc committee that created the position statement related to apraxia in children, and is a well-known researcher and clinician both nationally and internationally.

Check the CSHA website
www.cshassoc.org
for more information

CSHA T-Shirts

Show your Colorado Speech-Language-Hearing Association pride with a new CSHA t-shirt! Every 2014 CSHA member receives a FREE t-shirt, available for pick-up only at any CSHA event this year, starting with the Spring Conference and Job Fair on April 4. T-shirts will also be available for purchase by non-members for \$10.



Coffee Talks- Call for Informal Presenters!

CSHA enjoys providing local *Coffee Talks* on a variety of topics to share information or provide an opportunity for discussion amongst our colleagues.

We are looking for CSHA members interested in hosting a *Coffee Talk* on a topic they are passionate about! We will identify a location, provide advertising and light refreshments for your topic- all we need is YOU!

Please contact Amy Caye at the CSHA Office, csha@cshassoc.org, if you are interested. We will need your name, the Coffee Talk topic you'd like to provide and dates you are interested in hosting- and we'll take care of the rest!

Thanks for your interest and we look forward to working with you soon!



Better Hearing and Speech Month Contest!

Want to win FREE registration to CSHA's Fall Conference?



May is Better Hearing and Speech Month and we're looking for YOUR creative ideas to raise awareness about communication and hearing disorders and our roles as professionals in providing life-altering treatment!

- Submit your winning, creative and original ideas for promoting Better

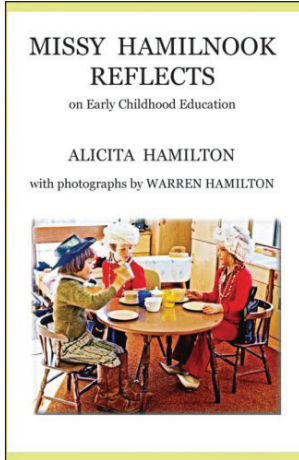
Hearing and Speech Month to CSHA. Finalists and their creative ideas will be published in the next *CSHA Newsletter* so ideas can be shared amongst our colleagues.

The winner will be decided by the CSHA Board, receive recognition on our Facebook Page and the CSHA website and win FREE registration to the CSHA Fall Conference!

Please submit ideas by April 15, 2014, on the CSHA website, www.cshassoc.org. Finalists and their ideas will be published in our May newsletter!

Book Review

D.U. Speech and Hearing Clinic Memoir



A new memoir, *Missy Hamilnook Reflects*, written by Alicita Hamilton, teacher of the DU Speech and Hearing Clinic pre-school for 20 years, will be a fun read for former DU students as well as for others working with young children. Her leadership from 1962 to 1982 provided a model for programs serving hard-of-hearing, speech and language impaired/delayed and normal children, with a philosophy of play as the basis for learning. This concept was new in special education, even with little children the idea had previously been to teach specific skills formally.

Hamilton presents cameos of some of the children, providing vivid examples of their response to the experiences she provides. Their stories, often poignant, are very real. Her feelings about them and the program she carries out are visible in letters she wrote to her mother during those years, fortuitously preserved, and rich in their contribution to the memoir. Together they make this book much more than the usual review of early childhood education principles.

The initial physical setting for the pre-school changed dramatically with the move to a new building, with great effect on the program. Many candid photographs by Warren Hamilton capture this, while revealing the rapt involvement of the children. The photos provide an inside view of what went on in the Speech and Hearing Clinic.

As a historic document pertinent to our field, and as an engaging narrative about one pioneer's work in helping children with speech, language and hearing problems, this book is worth your time. It is available from www.bookcrafters.net and other online bookstores, both in hard copy and ebook form.



Carol Erlich

YOUR DREAM JOB IS JUST A CLICK AWAY!

Access the Career Center and prepare to find the perfect job!

- Manage your job search
- Access hundreds of job postings
- Post an anonymous resume
- Advanced Job Alert system
- Never let another job opportunity pass you by!

Job search today at Colorado Speech-Language-Hearing Association!

Access CSHA's Career Center at
www.cshassoc.org



POWERED BY
 **JOBTARGET**

Student Corner

Colorado Speech Hearing Foundation Elizabeth G. Jancosek Graduate Student Scholarship

\$750 Scholarship

QUALIFICATIONS FOR APPLICATIONS

The applicant must be a resident of Colorado. The applicant must be currently enrolled in a graduate program or has been accepted into a graduate program for Fall 2014 at the University of Colorado or the University of Northern Colorado.

Applications and all documents must be submitted by May 15, 2014. The winner will be announced by June 15, 2014.

Applications are available on the CSHA website.

Applications must be submitted by email using the PDF forms. The essay, documentation of Colorado residency, unofficial transcripts and resume must be sent by email and received by May 15, 2014. Reference letters may be mailed to Terry Eberly, Foundation President, 7486 S. Kendall Blvd. Littleton, CO 80128.

Reference letters must be received by **May 15, 2014**.

CU-Boulder Student Update



It has been an exciting academic year so far at CU-Boulder's Speech, Language and Hearing Center (SLHC). Our clinic sustained some damage during the tragic floods in September. Students, staff, faculty and clients worked together to be flexible and creative to come up with new therapy spaces, tools

and schedules while the clinic underwent remodeling during the following months. Now, our clinic is looking updated and fresh with new carpet and paint, and our Child Learning Center (CLC) has a brand new tree house in the classroom! It has been a big hit among our toddlers and preschoolers.



In October, our NSSLHA chapter hosted the second annual Beers for Brains fundraiser at Avery Brewing Company. It was a fantastic event with a great turn out of nearly 200 students, faculty and community members! Between tickets sold at the door and items sold in a silent auction, the event raised \$3,248 – over \$1,000 more than the first year the event was held. Half of the funds went to SLHC and the other half went to Brain Buddy, a nonprofit organization dedicated to assisting people with aphasia. Stay tuned for information about the third annual Beers for Brains event coming up this fall!

In November, many of our students were able to attend the ASHA Convention in Chicago, Illinois. Our NSSLHA chapter was able to support many of these students financially. When the students returned, SLHC hosted an "ASHA Rehasha" meeting so students could share their newly acquired knowledge and resources with others. Students Sarah Gyory (second-year student), Ally Carillo (second-year student), and Molly Feider (first-year student) presented at the Convention.



ACE Award Listing

During April-September 2013, the following Colorado ASHA members and/or certificate holders were presented the Award for Continuing Education (ACE) by the Continuing Education Board. The ACE is a formal recognition of professionals who have demonstrated their commitment to lifelong learning by earning 7.0 CEUs (70 contact hours) within a 36-month period.

Martha Allen	Jacquelyn McKay
Jean Anne Bjork	Holly Murphy*
Todd Coleman	Pamela Panza
Kathleen Connell	Kjaeren Rutland
Joan Eckert	Marsha Scheinhartz
Susan Elling	Holly Segel
Wendy Framel	Faith Show
Ann Galloway	Nancy Sims
Janet Gronsten	Lida Smith Lafferty*
Sheri Hankins*	Tori Thompson
Tami Houser*	Amy Thrasher
Erika Kaye	Jenny Tipton
Ginger Kildee	Paul Visvader
Jannette Martin	

*CSHA Member



Keep Your CSHA Membership Information Up to Date

Visit the CSHA website (www.cshassoc.org) and make sure your CSHA Account is up-to-date. Log on to the Member Center of the website, enter your Last Name and your Member Number. Once submitted, you are able to edit your account information, such as mailing address, email address, professional information and more.

The Member Center also gives you access to renew your membership, register for an event, search for a member, access member only resources and print your membership card.

Log on today!

CSHA News General Information

Editor MayJean Barnes

CSHA News is an official publication of the Colorado Speech-Language-Hearing Association.

Deadlines for CSHA Newsletter

Winter	February 15
Spring	May 15
Summer	August 15
Fall	November 15

Material should be typed and double spaced. Articles for general information should not exceed 400 words. Letters to the Editor should be 200 words or less. All articles are subject to stylistic editing. Submit articles to the CSHA Central Office at csha@cshassoc.org

CSHA Newsletter Sponsorship

CSHA offers the following opportunities for newsletter sponsorship:

	Member	Non-Member	Dimensions
Full Page	\$200	\$300	7.75" wide x 10" high
Half Page	\$150	\$200	7.75" wide x 5" high
Quarter Page	\$100	\$150	3.75" wide x 5" high
Business card	\$50	\$75	3.75" wide x 2.5" high

Exclusive sponsorship of *CSHA News* is also available. Contact the CSHA Central Office at 855-727-2836, for further information. All copy must be submitted typeset and camera ready. Any costs incurred for additional artwork will be billed to the sponsor. Email copy to the CSHA Central Office at csha@cshassoc.org.

Acceptance of sponsorships does not imply CSHA's endorsement of the product or service. The Association reserves the right to reject copy. CSHA does not accept responsibility for the accuracy of statements made by sponsors. Neither CSHA, its officers, nor its staff is responsible for the statements and opinions published in the newsletter.

2014-2015 CSHA EXECUTIVE BOARD

President

Pamela Mayer

Treasurer Elect

Alison Wall

President Elect

Patricia Hurley

Communications Director

MayJean Barnes

Past President

Colet Scott-Bisping

Communications Director Elect

Jenny Lisson

VP for Public Policy

VACANT

Foundation Representative

Terry Eberly

VP for Public Policy Elect

VACANT

Student Liaisons

Sarah Zebrowski - CU

Kyle Delahanty - UNC

VP for Education

Donna Boudreau

CEU Administrator

Beth O'Brien

VP for Education Elect

Liliana Diaz Stagakes

CSHA Central Office

Amy Caye

303 South Broadway

Suite 200-323

Denver, CO 80209

csha@cshassoc.org

www.CSHAssoc.org

VP for Membership Elect

Robert Abrams

Treasurer

Kristin Blum