



Newsletter

A Publication of the Colorado Speech-Language-Hearing Association

Fall 2016

Inside This Issue

- ❖ 2016 Fall Conference
- ❖ A Day in the Life of SLPs and Audiologists
- ❖ CSHA Answers
- ❖ Dysphagia Rounds
- ❖ Getting to Know the CSHA Executive Board Members
- ❖ Mindful Communication
- ❖ CSH-Foundation



Scan this QR Code with your smart phone and check out CSHA's website. Get information on upcoming events, renew your membership, find links to important resources, and much more. If you have questions or suggestions on how CSHA can serve your needs better, please send us an email to csha@cshassoc.org or call us at 855-727-2836.



Colorado Speech-Language and Hearing Association

President's Letter



The beginning of the Fall season is one of my favorites. Cooler days, changing colors in the trees, new shoes and backpacks, the sounds of our neighborhood families squeezing every possible minute out of the daylight ... I find much to be grateful for. Your CSHA Board of Directors is among those things for which I am grateful. This group of professionals continues to work hard at advocating for and supporting our members. If you haven't done so, take a few moments to get acquainted with us on the CSHA website. The newsletter will continue to include introductions as another way for you to learn about us.

CSHA Board Members held an emergency meeting in July and agreed to release funds to expand our contract with a lobbyist to assist us in advocating for SLPs with Colorado Medicaid. You'll find a report in this newsletter from CSHA STAR Jenny Vail-Stencel on the current status of our efforts.

Our lobbyist has also continued to guide us in the recertification process for 2017. The Public Policy Analyst will be making a recommendation regarding renewal in October. It is critically important for those we serve in Colorado and our profession that certification continue. We'll share information with our members as it is made available to us.

The CSHA website redesign will be ready for our members to view at our Fall Conference. We are very happy with the changes! Member input will be important as the redesign nears completion. You'll have opportunity to provide that following the Conference.

Speaking of the CSHA Conference, have you registered yet? You'll find information on the Conference in this newsletter. Online registration is easy and convenient. I speak for all Board Members when I say that we look forward to meeting many of you there!

Lastly, CSHA VPs of Membership have been working closely with our Student Liaisons and Faculty at Colorado universities to plan a forum for interactions between the CSHA Board and students studying to become SLPs and AuDs. You'll find more information in this newsletter.

As always, we encourage our members to contact us with comments or questions.

Pamela Mayer, MS, CCC-SLP
CSHA President

2016 CSHA Fall Conference



Town Hall Meeting

Room: Harvard
Sheraton Denver Tech Center
Greenwood Village, Colorado

September 30 and October 1, 2016

CSHA Conference



CSHA's Fall Conference is fast approaching! We look forward to hosting two days of continuing education opportunities for our members and Colorado clinicians. The multi-track schedule is mixed with invited speakers and select call for paper submissions. Below are just a few of our Colorado-based speakers:



Jennifer Gray will present *Effective Strategies for Improved Communication and Speech Clarity for Children With the Diagnosis of Down Syndrome (Birth - Five Years)*.



Sherri Tennant and **Amy Thomas** will present *Talking, Writing and Learning: Pay Close Attention!*

It's not too late to register online at <http://www.cshassoc.org>. Attendees can also register on-site on Friday or Saturday.

Attending the Conference on Saturday? We hope to see you at the membership meeting during lunch. Pre-register for \$5 with your Conference registration.

Traveling from outside the Denver area? Hotel reservations are still available for the Conference. A special room rate of \$119 per night will be available until September 8, 2016, or until the room block is sold out. To book your room, call 1-888-627-7813. Or, book online at <https://www.starwoodmeeting.com/Book/CSHASEptMeeting>.

CSHA would like to announce a special addition to the Fall 2016 Conference. We will host a **Colorado Medicaid Town Hall Meeting** on Friday, September 30, from 12:15 pm-1:15 pm. Please note that lunch will not be available at the event. Attendees are welcome to bring lunch with them to the meeting. *CEUs are not available for this meeting.*

The panel will consist of various individuals who advocate for reimbursement and address Colorado Medicaid issues at the state and federal level.

Panel of speakers will include:

- ASHA Director of Private Health Plans and Medicaid Advocacy **Laurie Alban Havens**
- CSHA Board Member **Kathleen Mays**
- CSHA Lobbyist **Jennifer Mello**
- CSHA STAR **Jenny Vail-Stencel**

The panel will address the following topics during the event:

- Roles and responsibilities of panel members
- Brief review of recent CO Medicaid Audits and NCCI Edits
- How to support future member needs and advocate for reimbursement for speech-language therapy services
- Time for comments/questions from the audience (Please send your questions in advance to jenny@sparktherapy.co).

Updates From the CSHA STAR

CSHA sent a letter to Gretchen Hammer at Colorado Medicaid on August 1, 2016. The letter was shared with Christa Landis at the Medicaid Fraud Control Unit (MFCU). Since that time, MFCU has stated that, based on communication received from Colorado Medicaid, it is clear that fraud was not committed. Any individual or business who has received communication from MFCU should obtain documentation regarding their own cases. The open cases were sent back to the Colorado Department of Healthcare Policy and Financing (HCPF) for review and audit. CSHA has reached out to Medicaid via lobbyist Jennifer Mello several times in August and has not yet received any further communication. At this point, we would like to gather information for therapists on what they can expect in an audit with HCPF, what information the audit will be reviewing (i.e. documentation of services rendered versus any use of CPT codes) and how we can help as a group moving forward.

Read the full letter on the CSHA website: www.cshassoc.org.

Keep Your CSHA Membership Information Up to Date

Visit the CSHA website (www.cshassoc.org) and make sure your CSHA membership information is up-to-date. Log on to the Member Center of the website, enter your Last Name and your Member Number. Once submitted, you are able to edit your account information, such as mailing address, email address, professional information and more.

The Member Center also gives you access to renew your membership, register for an event, search for a member, access member only resources and print your membership card.

A Day in the Life of SLPs and Audiologists

CSHA is partnering with the NSSHLA chapters at Metro State, CU and UNC to host a live panel discussion/Q&A for students with four speech pathologists and an audiologist. Students can ask questions to learn more about the “Day in the Life” of a practicing clinician.

The event is being held at the Tivoli Room 320C on the Metropolitan State Campus and is being streamed live to the University of Colorado and the University of Northern Colorado. The event is scheduled for Tuesday, September 6, from 5:30-7:00 pm and all speech-language pathology/audiology students are welcome to attend the event in-person in Denver. If you are interested in attending, see the flyer on Page 4.

Denver Dysphagia Rounds

Are you a speech-language pathologist who treats patients with dysphagia? **Denver Dysphagia Rounds** will meet on Tuesday, September 27, from 5:30-7:00 pm on the Craig Hospital campus in Englewood.

Clinicians with all levels of experience who have an interest in dysphagia are welcome to attend. The group meets quarterly to present interesting case studies, share information learned at conferences and discuss the latest research on dysphagia. For more information, contact Jen Carter at jen@carterswallowingcenter.com.

Frequently Asked Questions



A section for frequently asked questions (FAQs) will be coming soon to the updated CSHA website this fall! As a preview, here are some recent questions asked of the CSHA Board and our responses.

I'm a CSHA member and hold an SLP Special Services License. Does CSHA recommend I renew this

license or is it not necessary with our DORA license now? I am not employed by the public schools, I work for a non-profit hearing and speech clinic. I occasionally do fill in at some charter schools as a contractor, when they don't have their own SLP employees.

CSHA's Recommendation: As this is not a requirement for DORA, it is not necessary to renew the Special Services license, unless the charter schools with whom she contracts require it.

I was wondering what Colorado's guidelines and/or minimum qualifications are for a speech-language pathologist to supervise an SLPA. I can't seem to find information online. Thank you for your help!

CSHA's Recommendation: ASHA outlines the minimum qualifications that a supervising SLP must have within the ASHA Speech-Language Pathology Assistant Scope of Practice policy. Colorado does not regulate the supervision of SLPAs or have additional requirements separate from ASHA's. ASHA's guidelines for supervising SLPAs can be found at <http://www.asha.org/policy/SP2013-00337/#sec1.12.1>.

Stay tuned for more FAQs on the new CSHA website to be unveiled this fall!

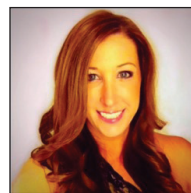
Getting to Know the CSHA Executive Board Members



Pamela Mayer
President

Pam earned her bachelor's and master's degrees in speech-language pathology from Idaho State University (ISU) and began her professional career as a private contractor providing services in rehabilitation, behavioral and private adult and pediatric settings. In addition, she was invited to return to ISU as a clinical instructor where she taught and supervised graduate students in their clinical experience in the ISU Communication Preschool program. Currently, Pam owns Talk and Play Associates, LLC, a private speech, language and occupational therapy clinic. Her passion is working with children and their families using research- and play-based clinical approaches.

Pam and her husband, John, have lived in Colorado since 2007. Prior to that they lived on and worked the family farm in Idaho raising grains and sugar beets. They have two adult children; Madi, a full-time college student studying accounting and working as office manager of Talk and Play Associates, LLC, and Nick, a musician and barista living in Nashville.



Darcy Borella
Communications Director

Darcy earned her Bachelor of Science degree in communication sciences and disorders at the University of Texas at Austin, and her master's in speech-language pathology at the University of North Texas. She began her clinical fellowship covering skilled nursing facilities in the Texas hill country and immediately knew she wanted to focus her career on helping the geriatric population. She quickly found that she also enjoyed managing the business aspects of rehabilitation, and spent several years as a director of rehabilitation, regional therapy manager and regional vice president. Most recently, Darcy has accepted a director of clinical operations position with Rehab Solutions and is looking forward to overseeing the day-to-day ops of this local, Colorado company.

Darcy moved to Colorado two years ago and is currently serving on the CSHA board as the Communications Director. She and her fiancée, Rob, are planning a wedding and in their free time, they enjoy hiking with their dog Roscoe.

A Day in the Life of SLPs and Audiologists

Live Panel Q&A With Practicing Clinicians

What: A panel of 4 speech-language pathologists and an audiologist who work in a variety of settings will be available to answer student questions about “a day in the life” of their work.

Students can submit questions ahead of time and ask the panel questions during the event.

When: Tuesday September 6, 2016, from 5:30 pm - 7:00 pm

Where: Metropolitan State University campus
Tivoli Room 320C

The event will be streamed live to the NSSHLA chapters at the University of Northern Colorado (Room 2540-Gunter Hall) and the University of Colorado (Room 393-SLHS Building).

All students are also welcome to attend the event in-person at Metro.

Questions:

Meeting space or live streaming – Derek Matsui (dmatsui@msudenver.edu)

Speakers – Carlyn Hooper (cmhooper22@gmail.com)

Meeting location at CU – Erin Leary (erin.leary@colorado.edu)

Meeting location at UNC – Mackenzie Baxter (baxt7812@bears.unco.edu)

Co-Sponsored by:



Mindful Communication

Mindful communication at work is becoming quite a popular concept in the world of professional development. After reading *The Art of Communicating* by T. Nhat Hanh, I wanted to share some ideas to help manage the stress we may encounter on a daily basis.

- As you are walking in to work, try to focus on breathing and feeling each step you take to help you stay present, and better prepare for the day ahead.
- Smile at every person you meet and offer a greeting. This will help set the mood for the rest of your day.
- Arrive early to meetings to allow time to sit quietly and refocus your mind.
- When faced with a challenging idea during a conversation, try to listen without anticipating a response. Then ask open-ended questions to clarify what you have heard.
- When paraphrasing what you have heard pick your words and try to come from a place of kindness and respect for the speaker.

Acknowledging your mood or emotions can help you refocus and make your communication with others more effective, clearer and better understood by allowing you a few seconds to check in with yourself. It can be challenging to not allow stress to take over our reactions; but, with time and practice a better way to communicate can be developed. Speech-language pathologists are experts in communication and as such we can model for others mindful communication at work and help improve everyone's daily interactions.

Nhat Hanh, T (2013). *The Art of Communicating*. New York, NY: HarperCollins

Liliana Stagakes

CSHA President-Elect

2016 CSHA EXECUTIVE BOARD		
President Pamela Mayer	VP for Membership Jennifer Carter	Foundation Rep. Terry Eberly
President Elect Liliana Stagakes	VP for Membership Elect Carlyn Hooper	Student Liaisons Marissa Auerbach - CU Makenzie Baxter - UNC Derek Matsui - Metro
Past President Patricia Hurley	Treasurer Alison Wall	CSHA Central Office Account Manager Amy Caye c/o Craven Management Associates 700 McKnight Park Dr. Suite 708 Pittsburgh, PA 15237 855-727-2836 csha@cshassoc.org www.CSHAssoc.org
VP for Public Policy Allison Foster	Treasurer Elect Jenny Lisson	
VP for Public Policy Elect Jill Cimino	Communications Director Darcy Borella	
VP for Education Sadie Panzer	Communications Director Elect Hannah CuvIELLO	
VP for Education Elect Kathleen Mays		

Colorado Speech-Language-Hearing Foundation

It is with great pleasure that we announce that Sai Rajopadhye was awarded the Elizabeth G. Jancosek Graduate Student Scholarship for 2016. Ms. Rajopadhye is enrolled in the master's program at the University of Northern Colorado. Her outstanding academic record and desire to work with high-risk infants and children reflects the focus of Dr. Jancosek's teaching and research. The CSH Foundation Board of Directors congratulate Sai Rajopadhye.

The Colorado Speech-Language-Hearing Foundation was founded in 1984. Since that time, we have awarded numerous graduate student scholarships, professional studies grants and support to CSHA in funding speakers for professional education activities.

Monies for the scholarship are raised through donations. Please see the display at the Fall Conference for opportunities to donate to the Foundation.

The members of the CSH Foundation Board of Directors include:

- Catherine Curran, PhD, CCC-SLP, Professor, Metro State University of Denver
- Terry Eberly, MA, CCC-SLP, Chair of the Foundation, Kindred Hospital
- Tracy Kovach, PhD, Augmentative Communication
- Susan Moore, JD, MA, University of Colorado
- Kim Murza, PhD, Professor University of Northern Colorado
- Jeff Steffen, MA, CCC-SLP, Private Practice

CSHA Newsletter General Information

Editor Darcy Borella
CSHA Newsletter is an official publication of the Colorado Speech-Language-Hearing Association.

Deadlines for CSHA Newsletter

Spring February 15
 Summer May 15
 Fall August 15
 Winter November 15

Material should be typed and double spaced. Articles for general information should not exceed 400 words. Letters to the Editor should be 200 words or less. All articles are subject to stylistic editing. Submit articles to the CSHA Central Office at csha@cshassoc.org

CSHA Newsletter Sponsorship

CSHA offers the following opportunities for newsletter sponsorship:

	Member	Non-Member	Dimensions
Full Page	\$200	\$300	7.75" wide x 10" high
Half Page	\$150	\$200	7.75" wide x 5" high
Quarter Page	\$100	\$150	3.75" wide x 5" high
Business card	\$50	\$75	3.75" wide x 2.5" high

Exclusive sponsorship of **CSHA Newsletter** is also available. Contact the CSHA Central Office at 855-727-2836, for further information. All copy must be submitted typeset and camera ready. Any costs incurred for additional artwork will be billed to the sponsor. Email copy to the CSHA Central Office at csha@cshassoc.org.

Acceptance of sponsorships does not imply CSHA's endorsement of the product or service. The Association reserves the right to reject copy. CSHA does not accept responsibility for the accuracy of statements made by sponsors. Neither CSHA, its officers, nor its staff is responsible for the statements and opinions published in the newsletter.